

Speke South-1 GeoVISION Service RM 500MD

RAB
ADN

id13_0c_02
id13_0c_02

MWD_10

id13_0c_02

Format: GeoVISION Service Log Vertical Scale: 1:500 Graphics File Created: 19-Apr-2008 00:08

PIP SUMMARY

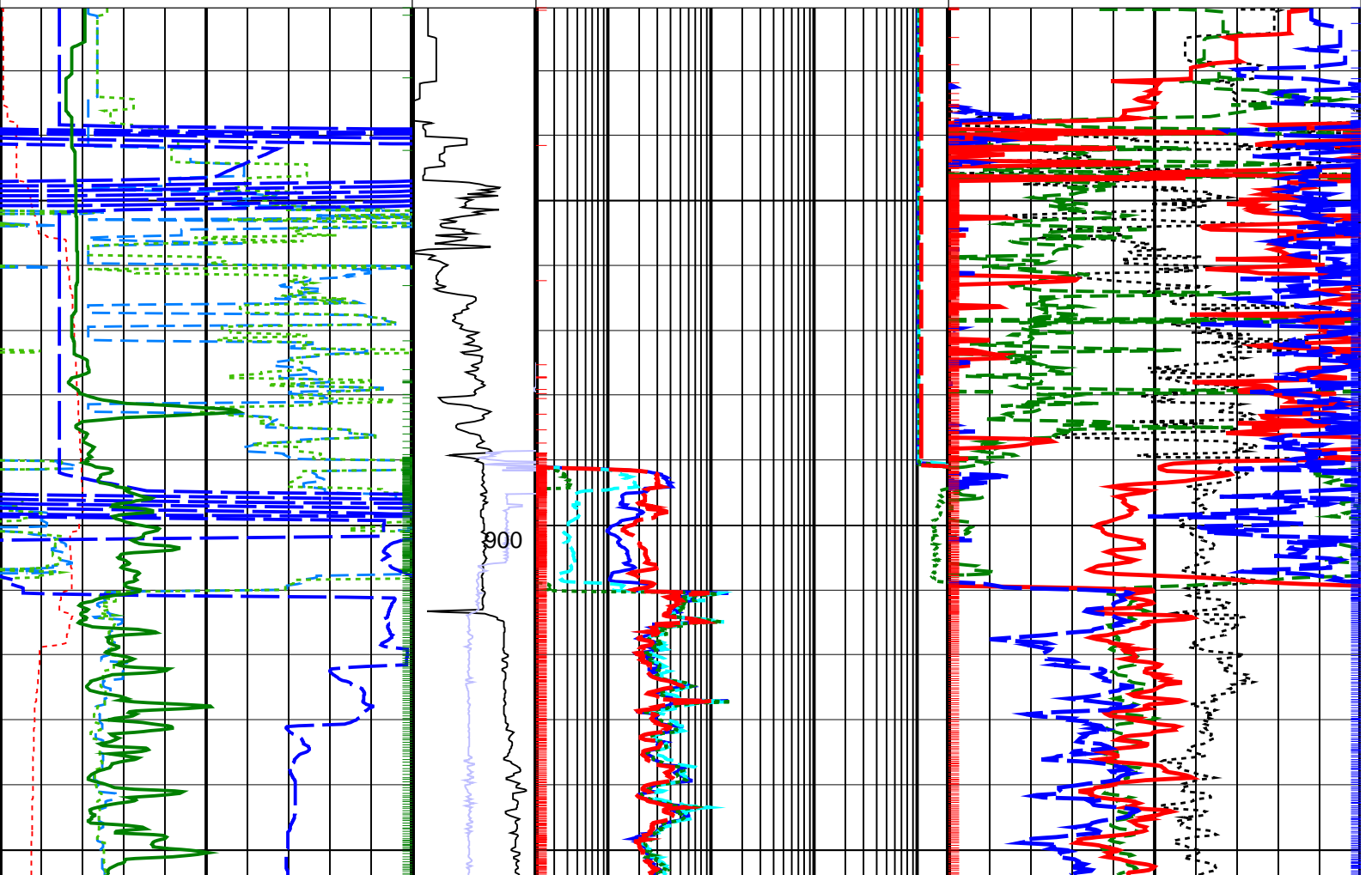
Density Samples †

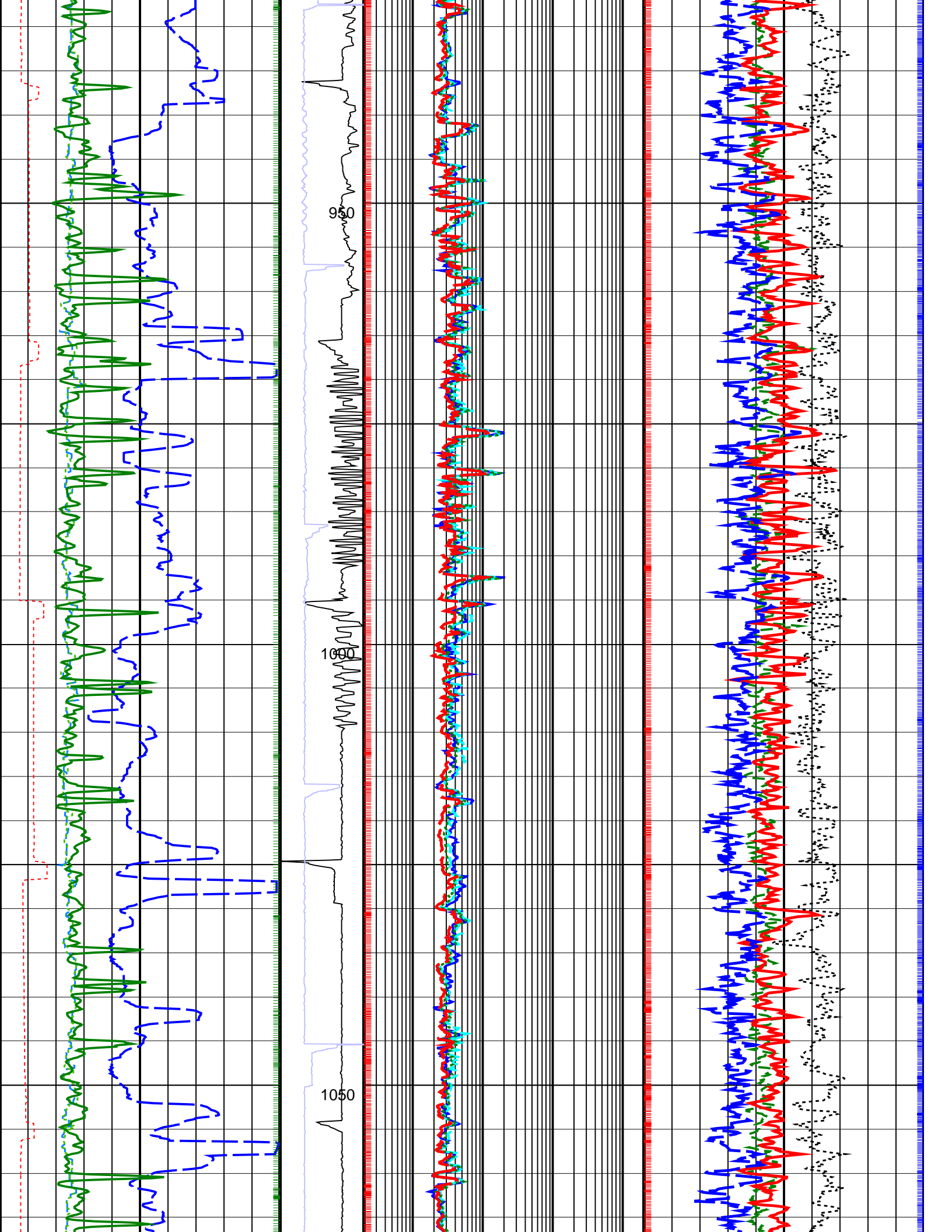
Neutron Samples †

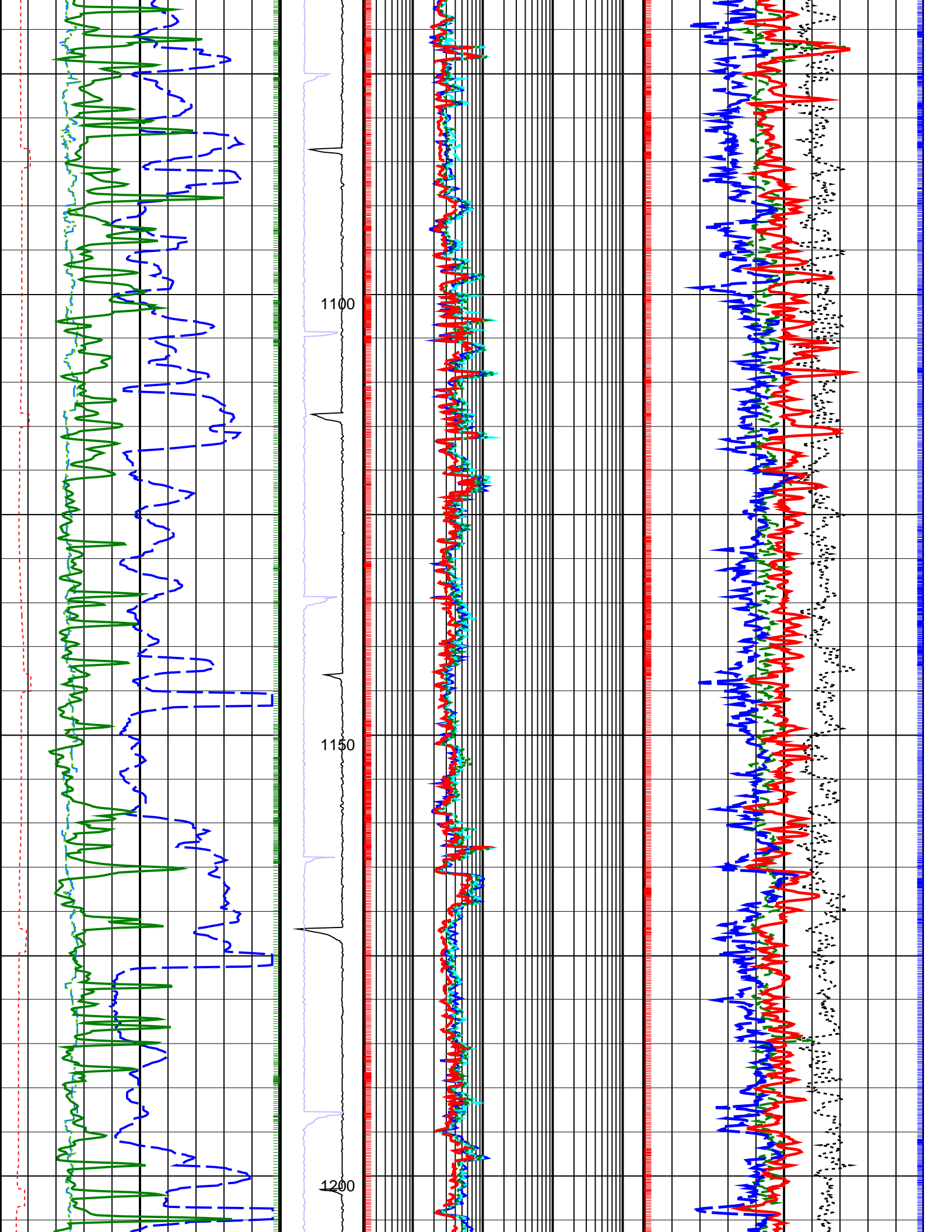
† Gamma Ray Samples

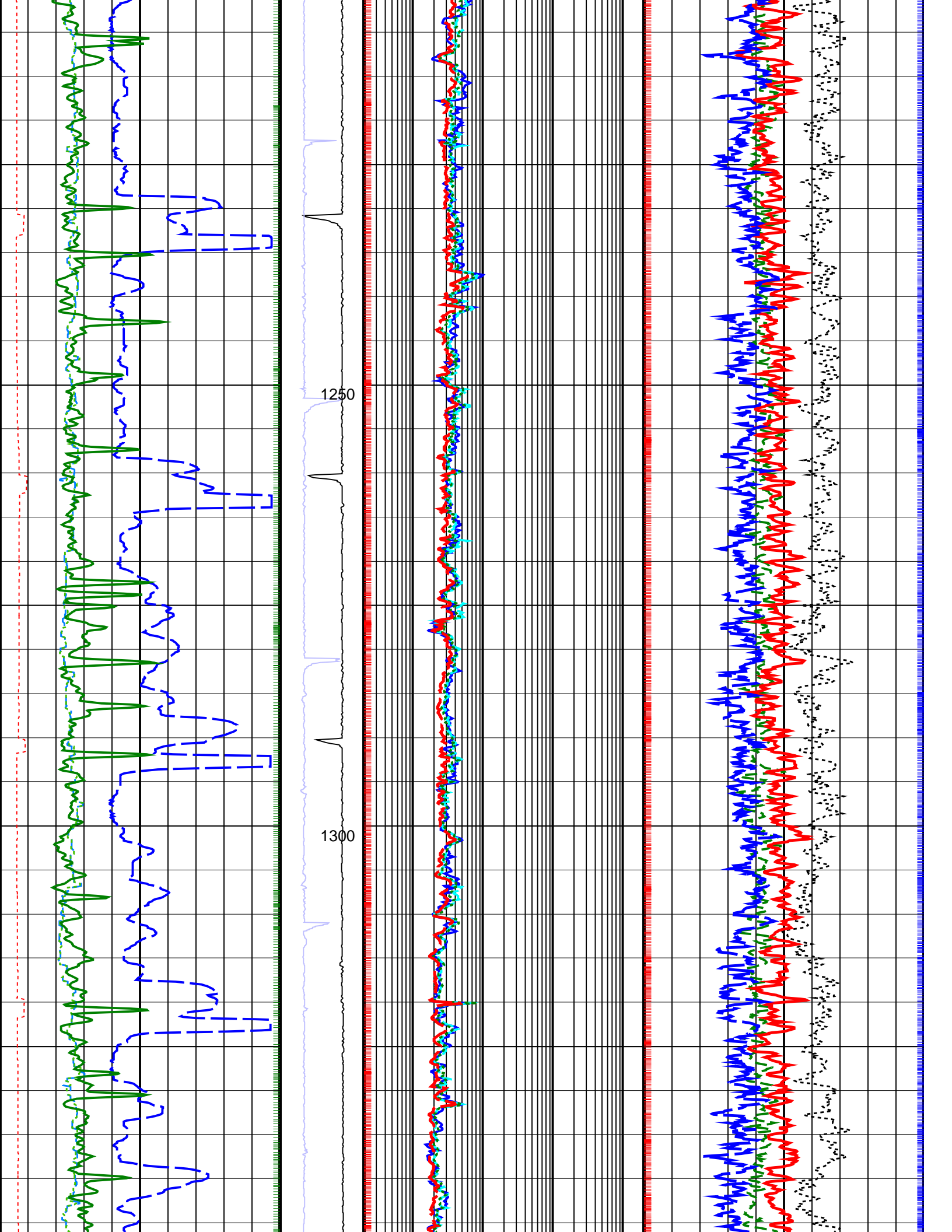
† Ring Samples

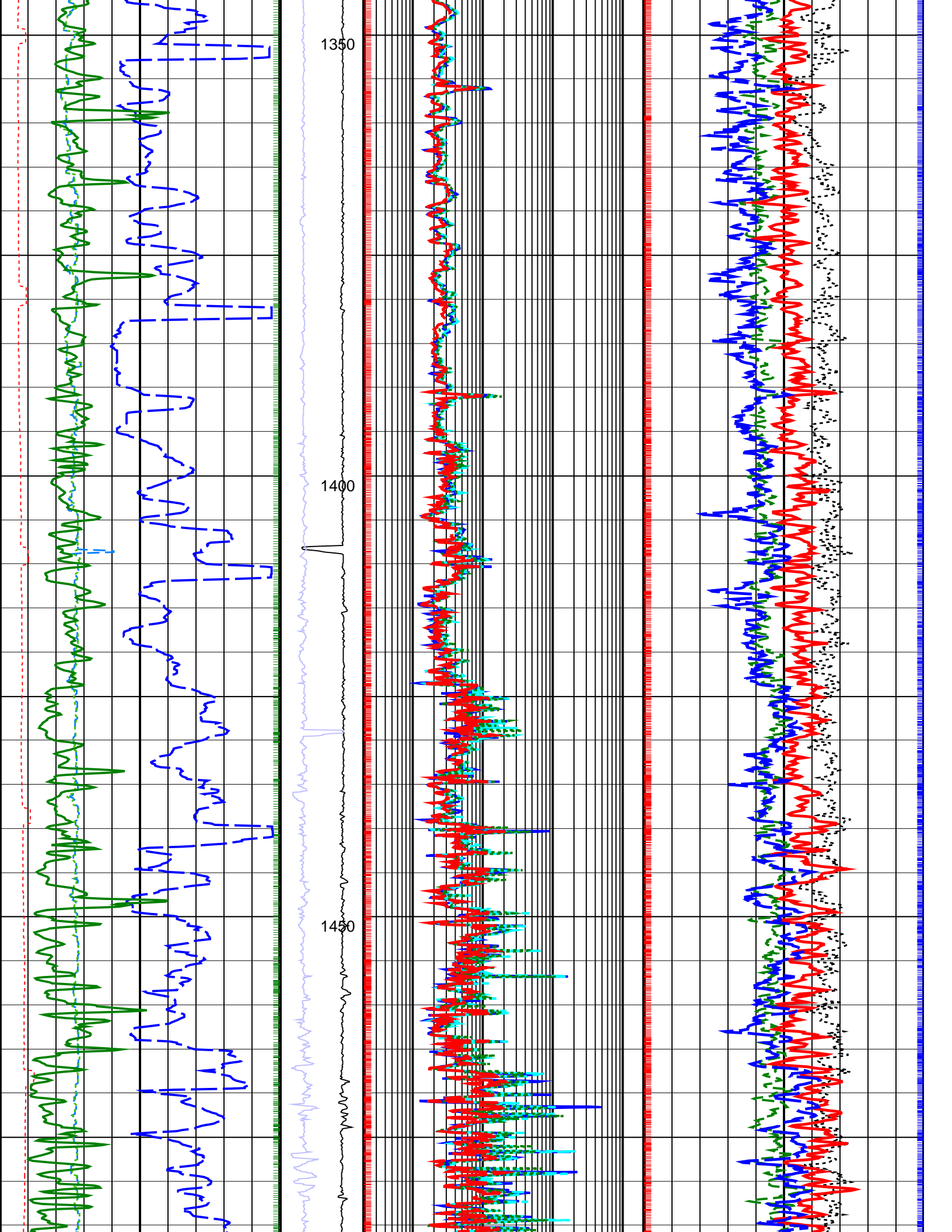
<p>Rate of Penetration, Averaged over Last 5ft (ROP5_RM) (M/HR) 0</p>		
<p>RAB Gamma Ray (GR_RAB) (GAPI) 200</p>	<p>Ring Resistivity (RES_RING) (OHMM) 2000</p>	<p>Thermal Neutron Porosity (TNPH) (PU) -15</p>
<p>Vertical Hole Diameter (VERD) (IN) 16</p>	<p>Shallow Button Resistivity (RES_BS) (OHMM) 2000</p>	<p>Bulk Density, Bottom (ROBB) (G/C3) 2.95</p>
<p>Horizontal Hole Diameter (HORD) (IN) 16</p>	<p>RAB Rotational Speed (RPM_RAB) (RPM) 250</p>	<p>Medium Button Resistivity (RES_BM) (OHMM) 2000</p>
<p>Density Time After Bit (TAB_DEN) (HR) 10</p>	<p>ADN Rotational Speed (RPM_ADN) (RPM) 250</p>	<p>Photoelectric Factor, Bottom (PEB) (----) 10</p>
		<p>Deep Button Resistivity (RES_BD) (OHMM) 2000</p>
		<p>Bulk Density Correction, Bottom (DRHB) (G/C3) -0.25 0.25</p>

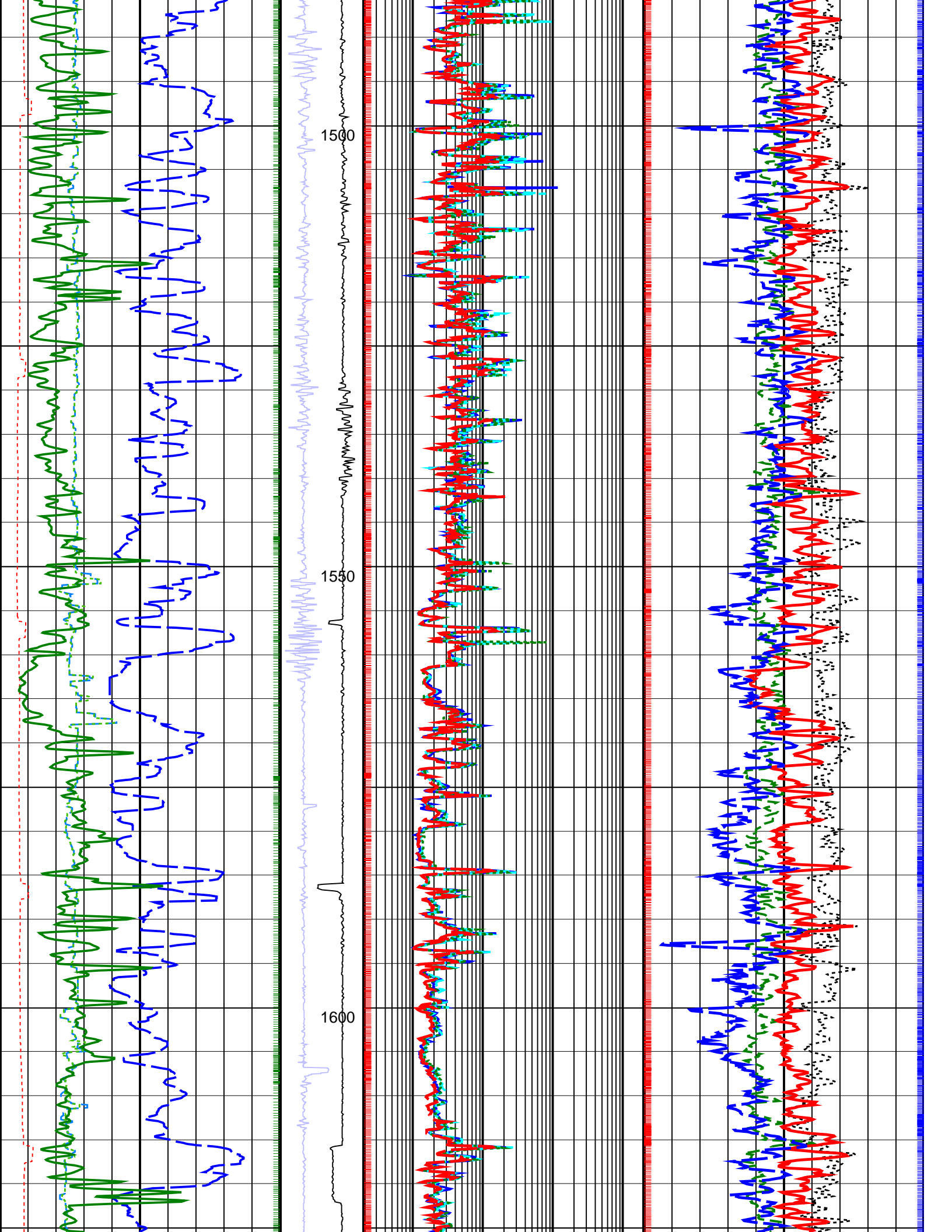


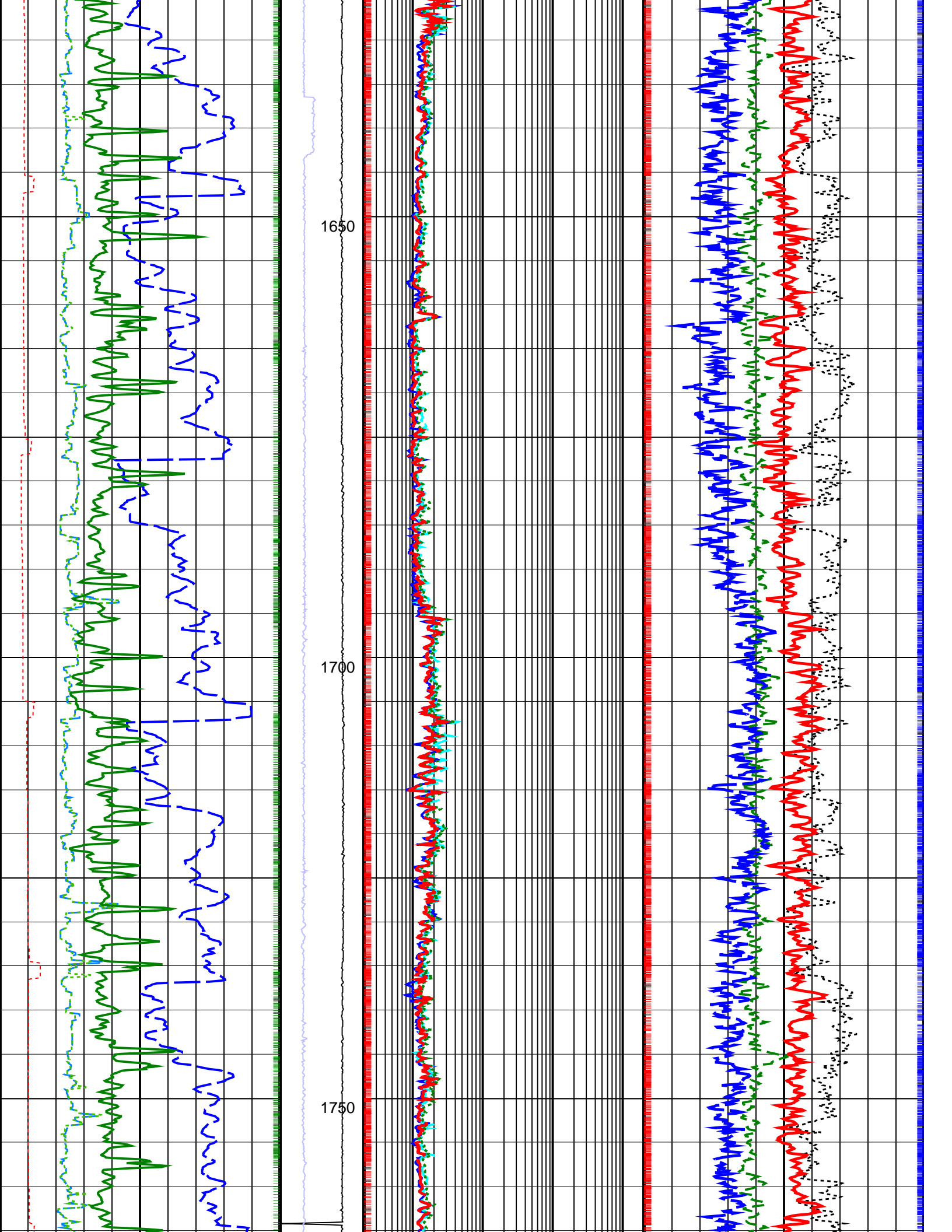


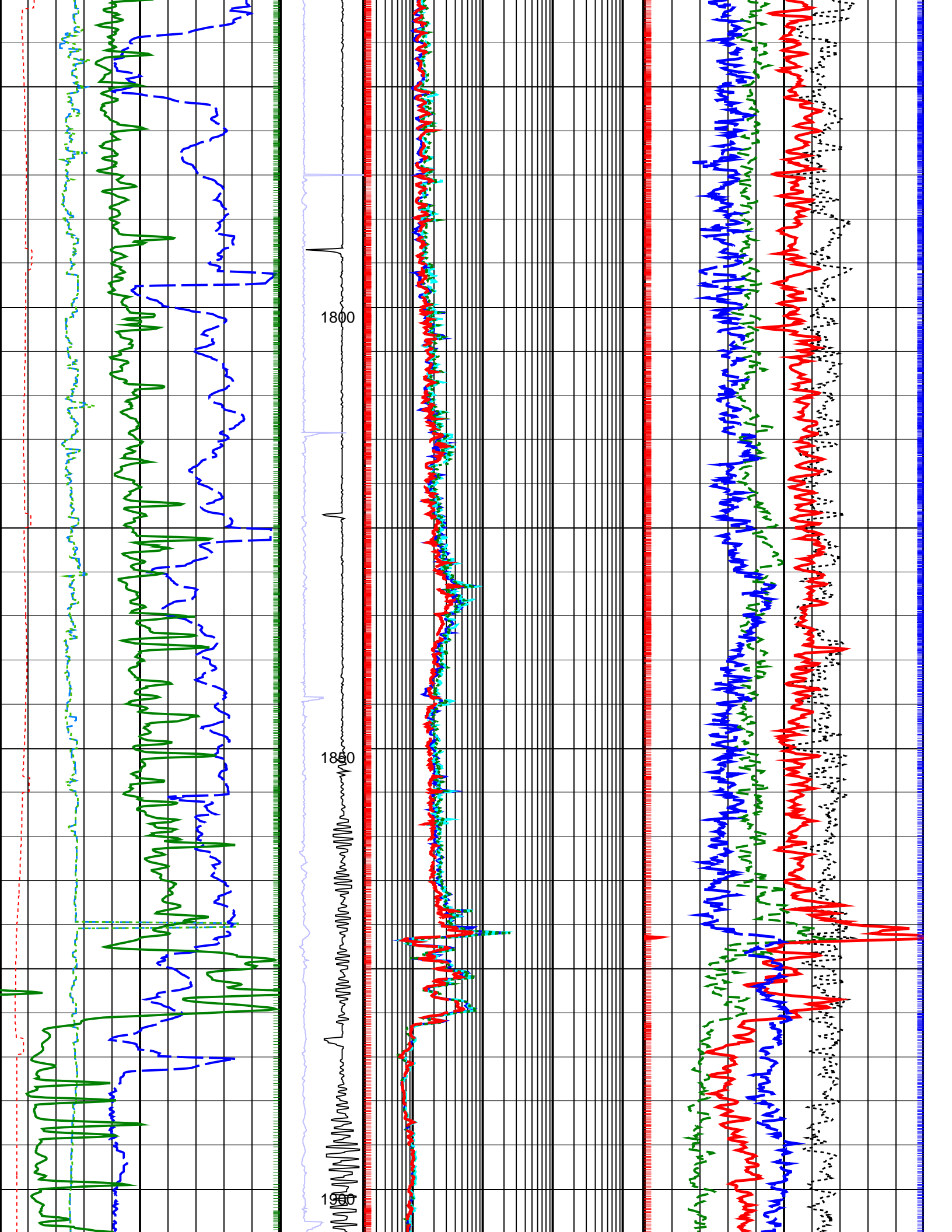


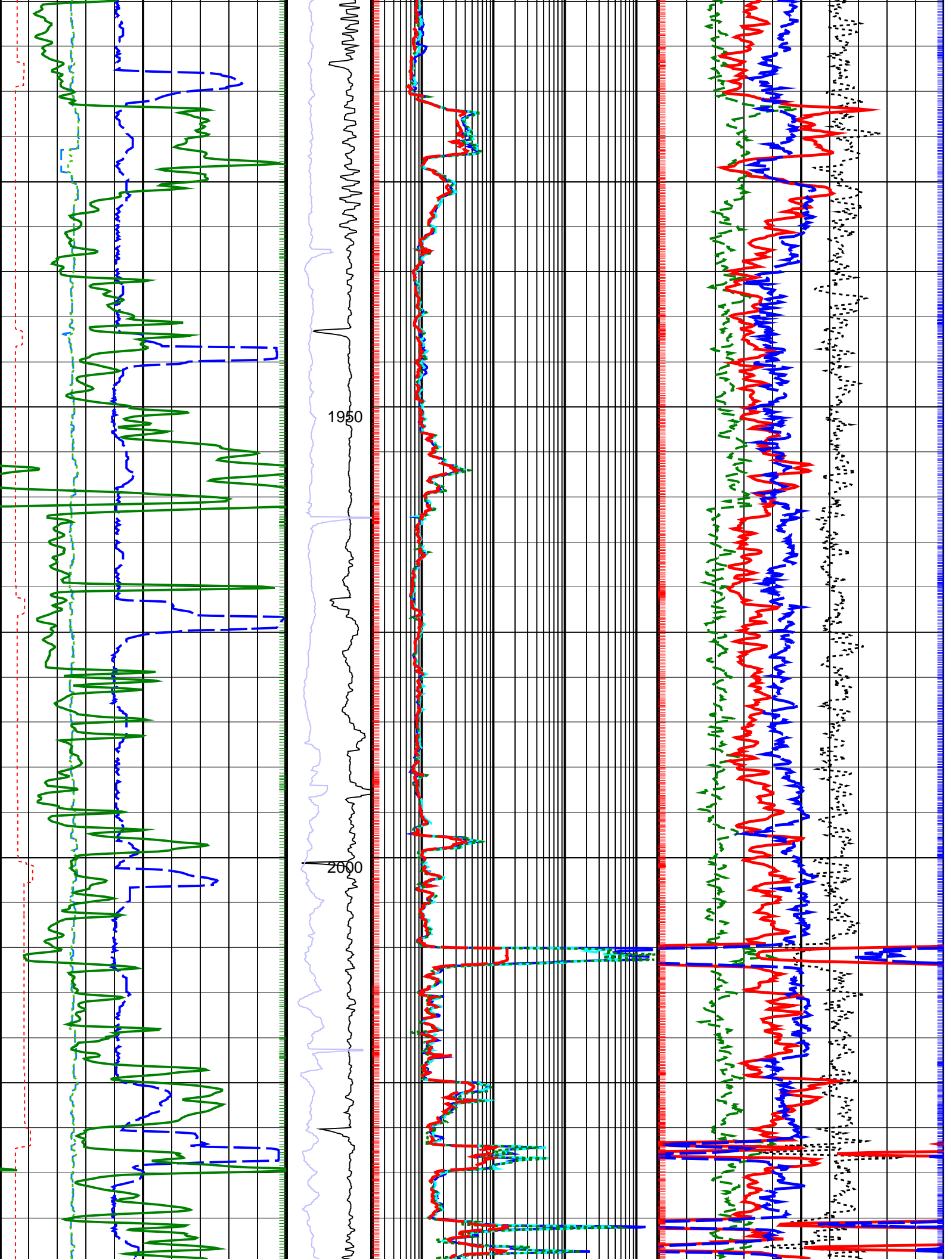


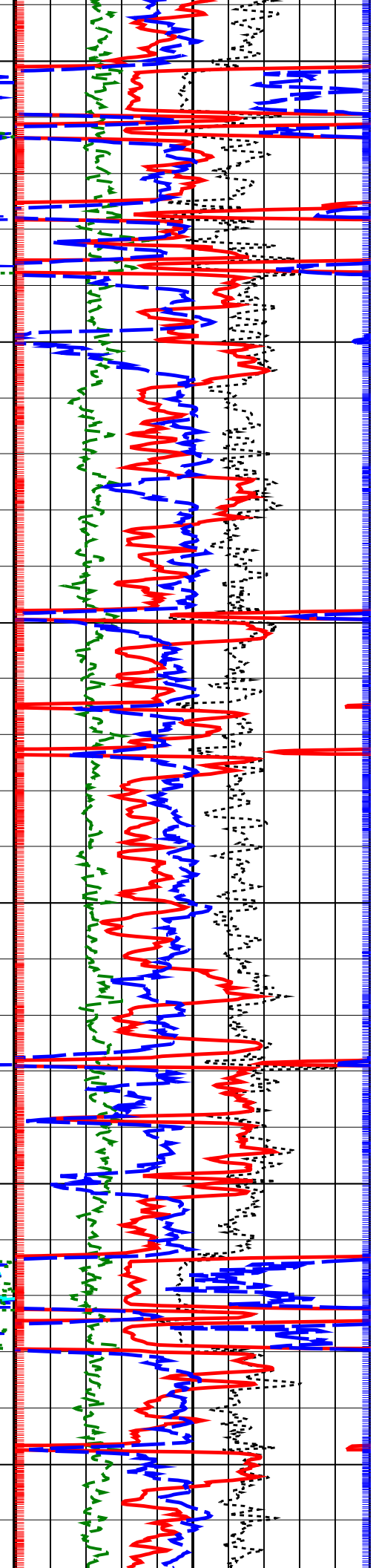
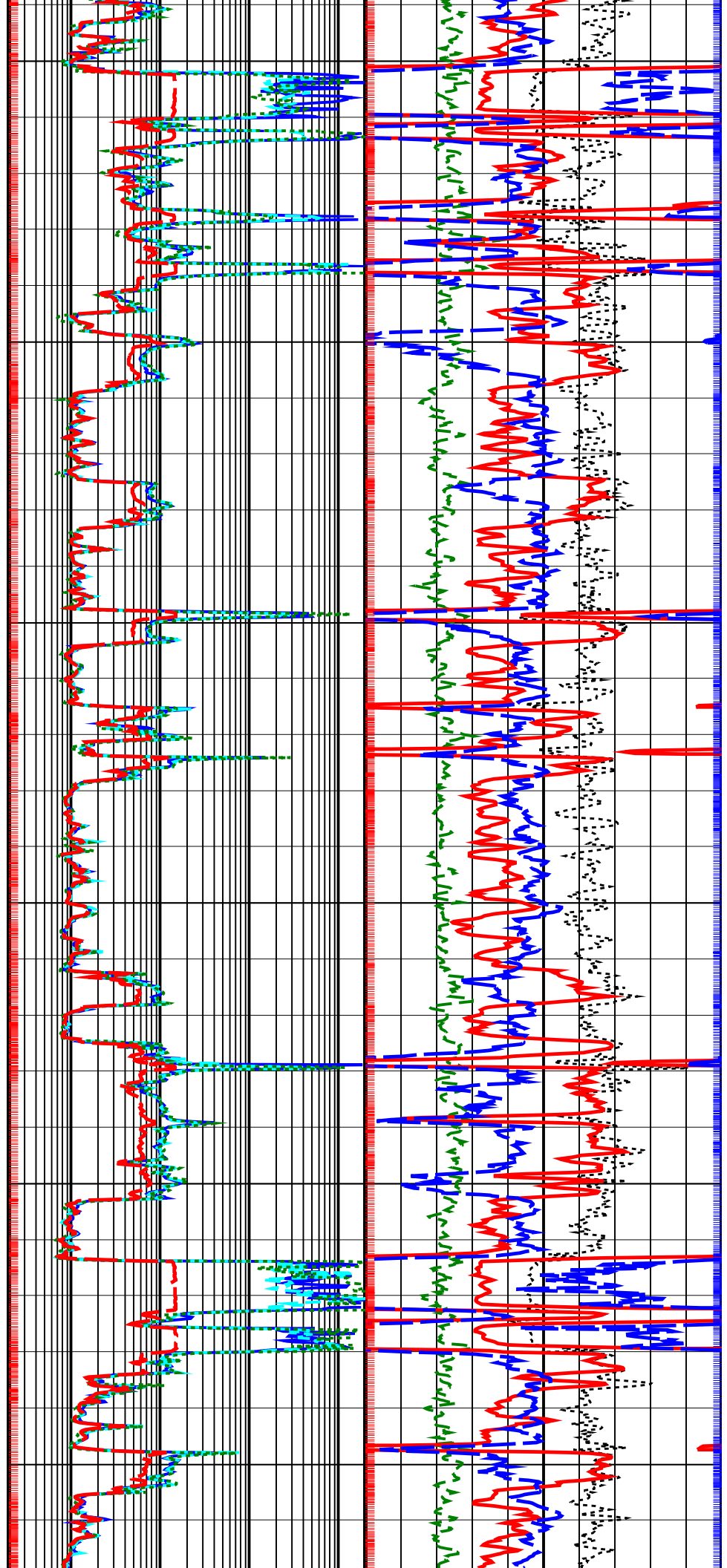
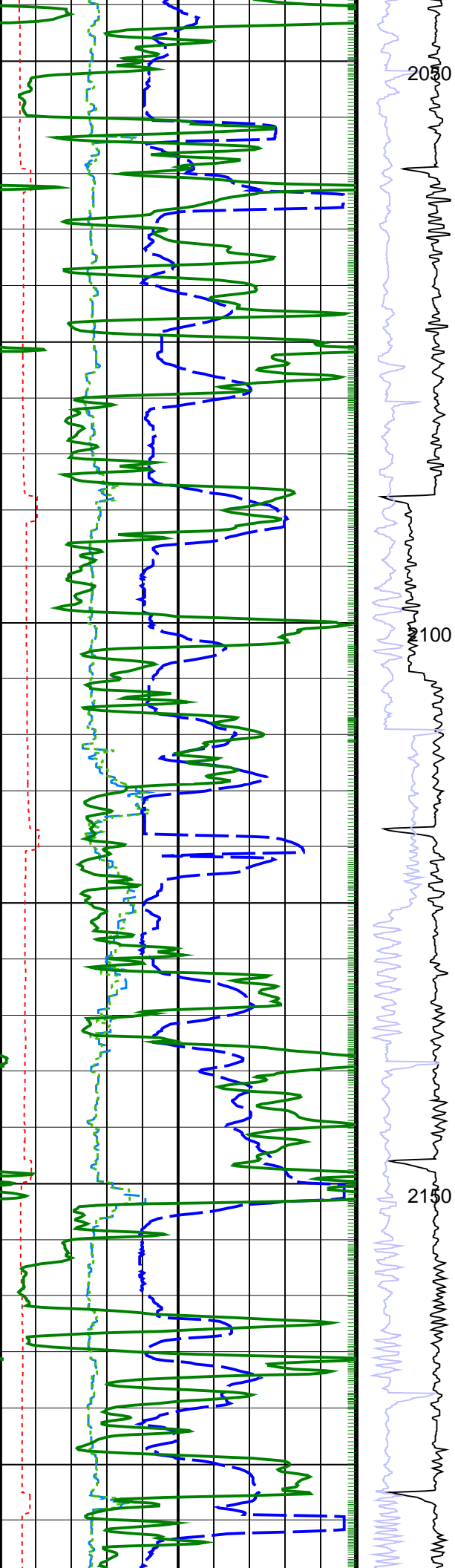


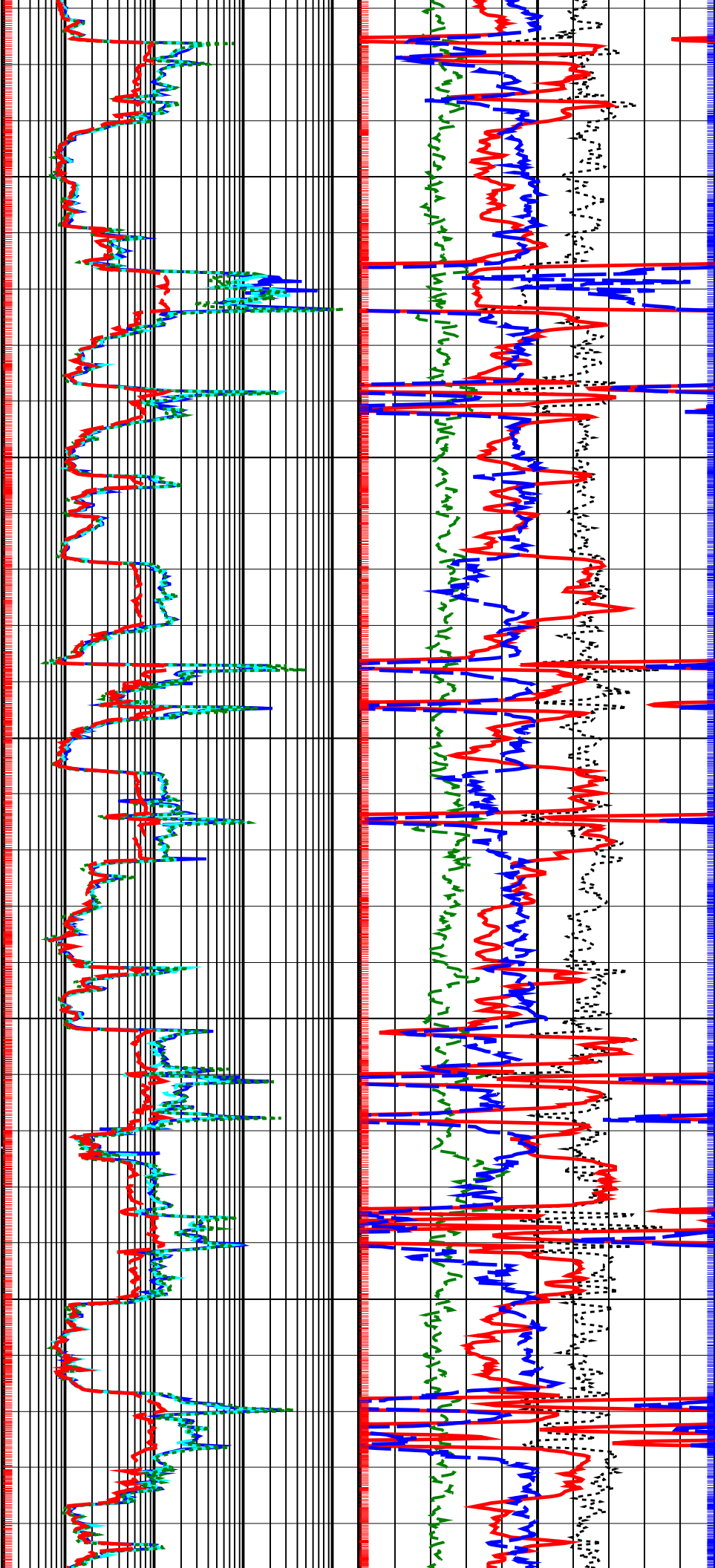
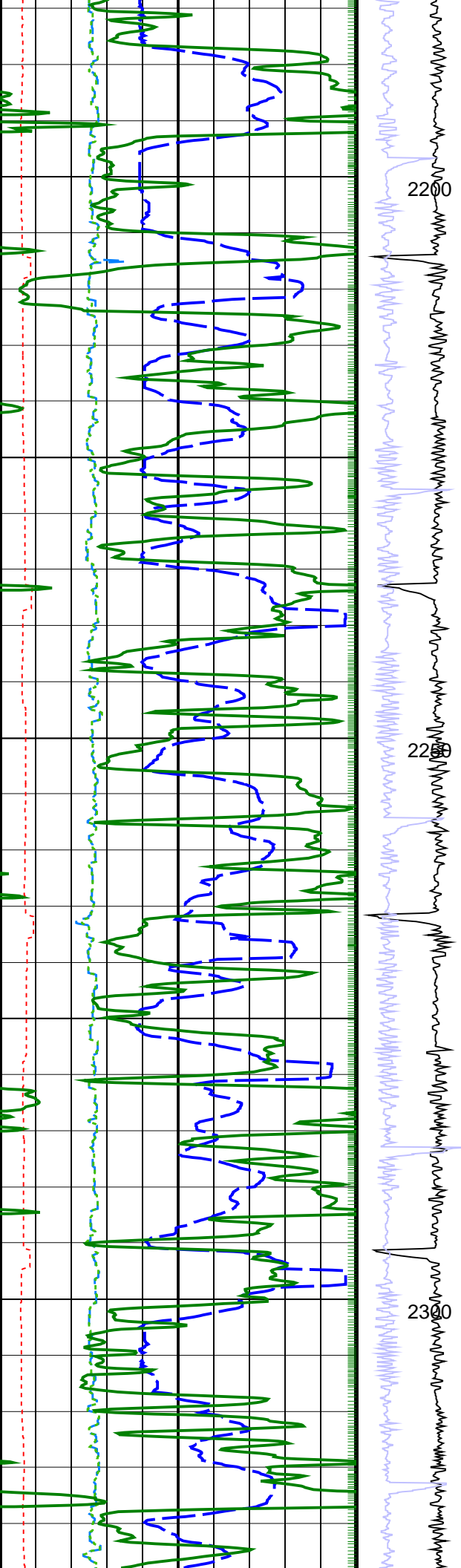


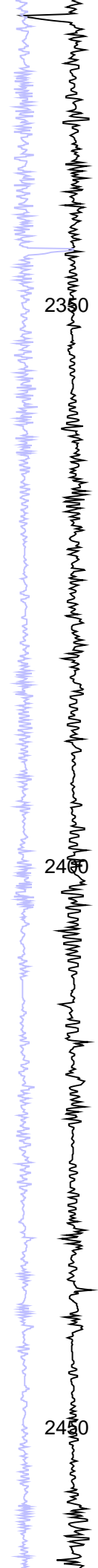
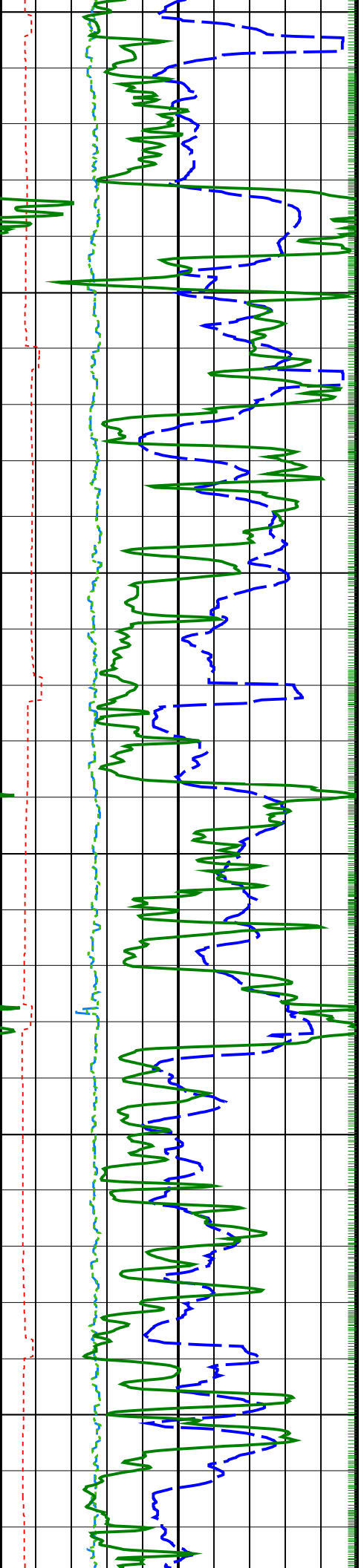








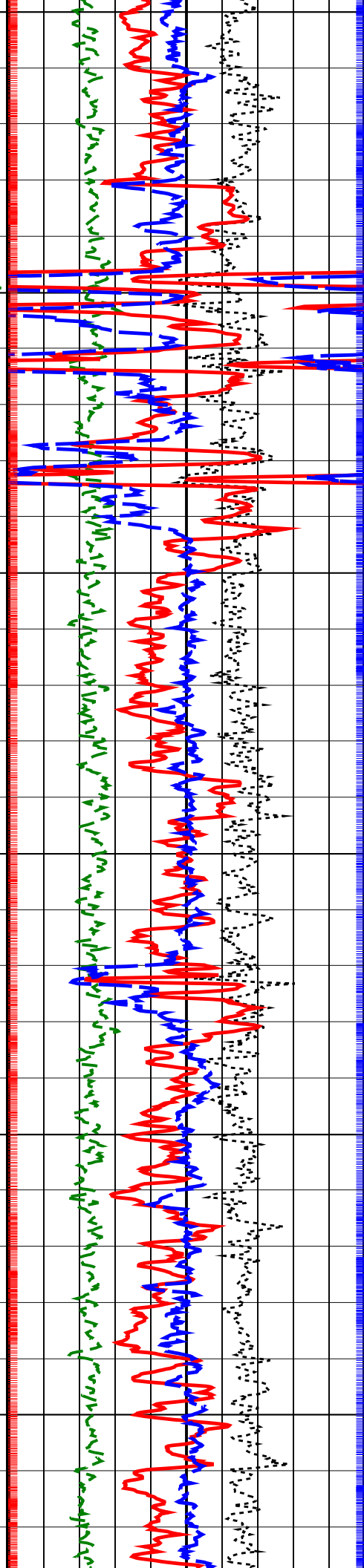
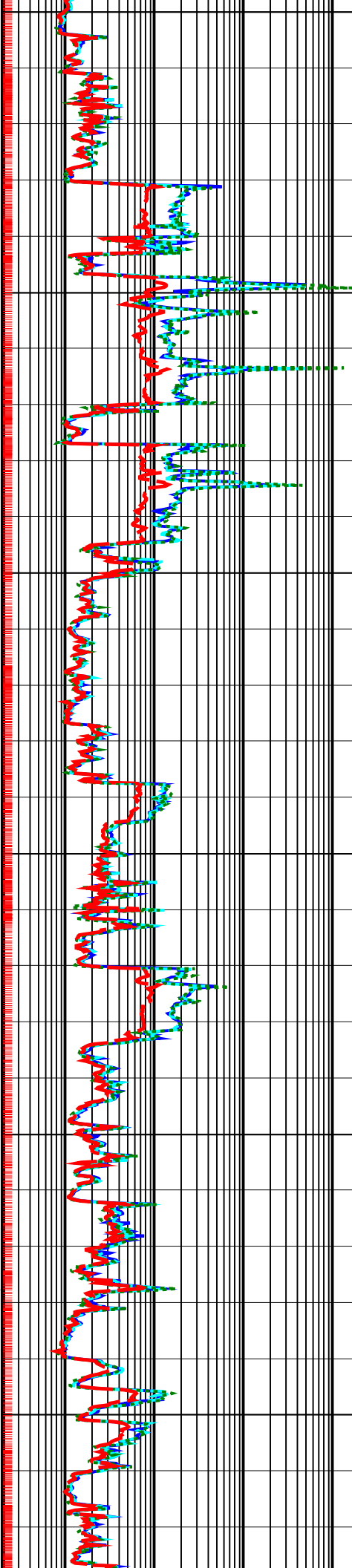


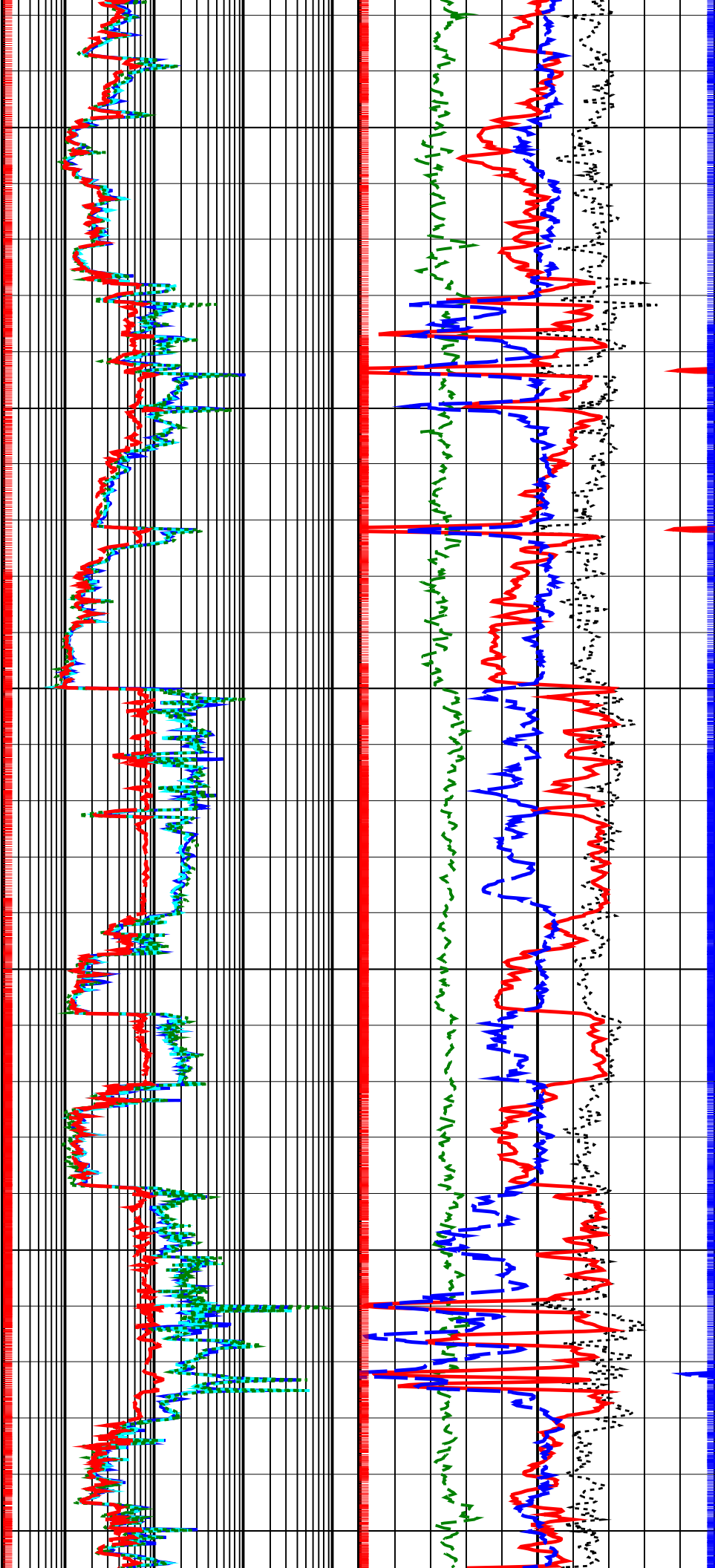
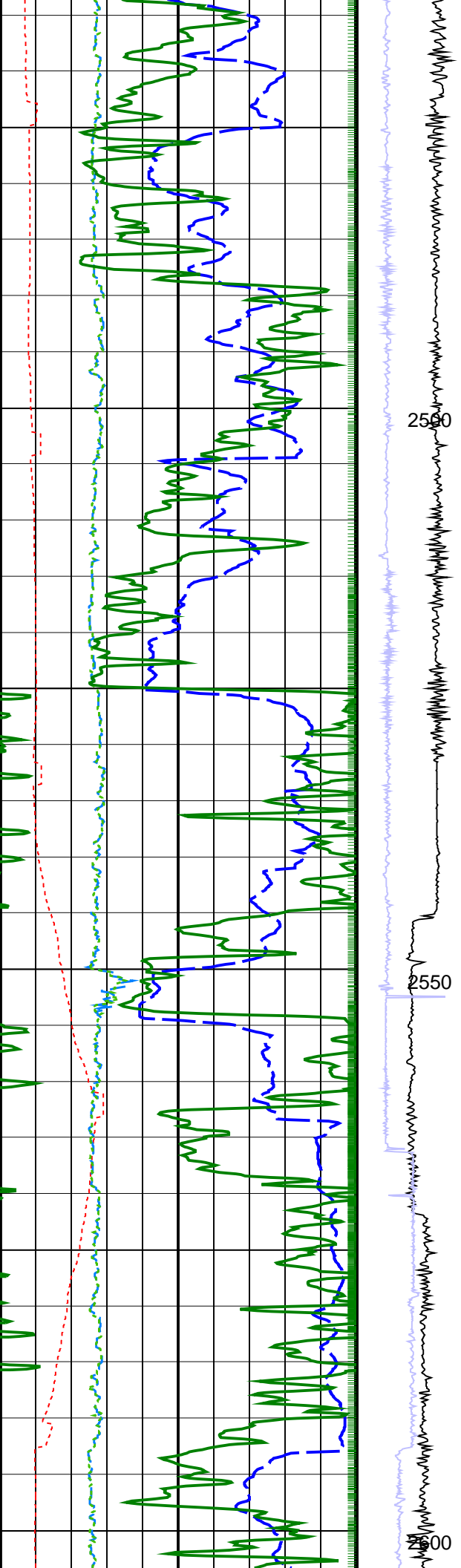


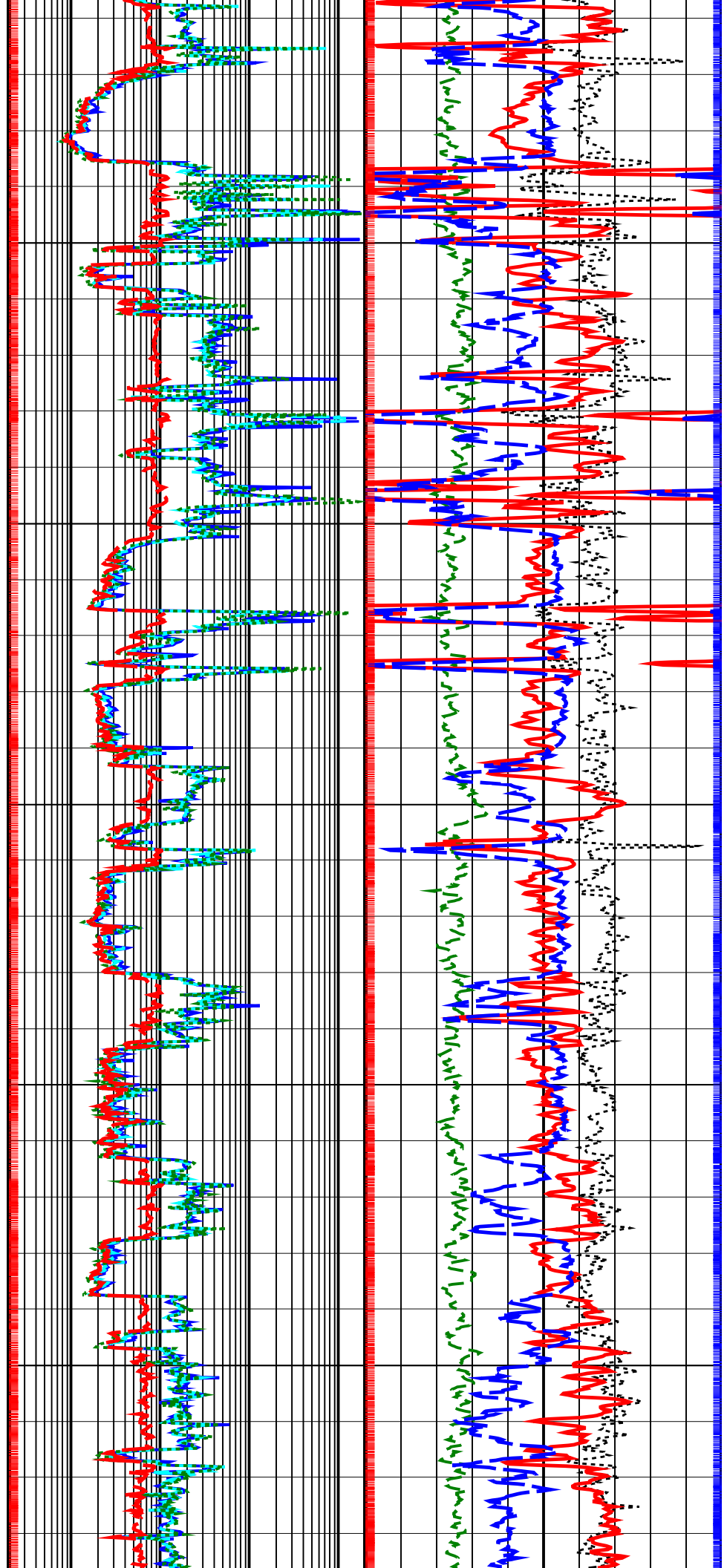
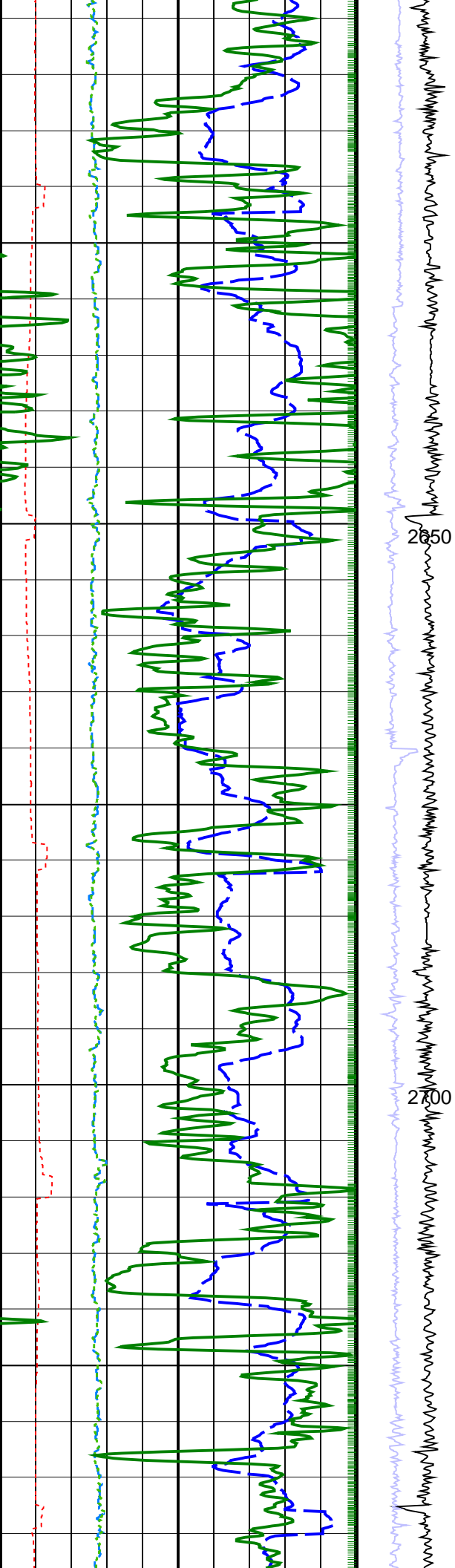
230

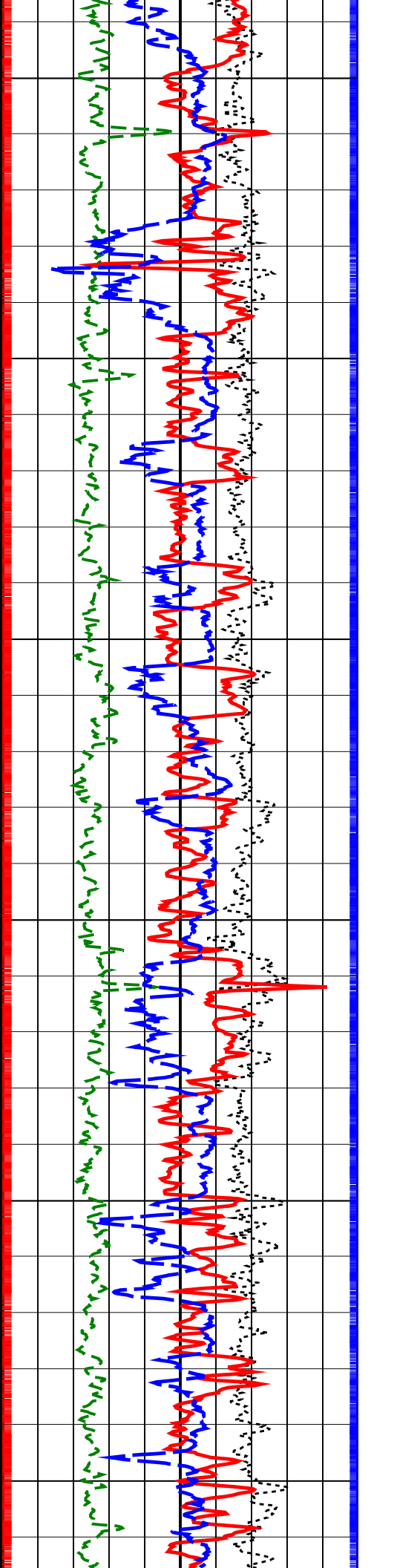
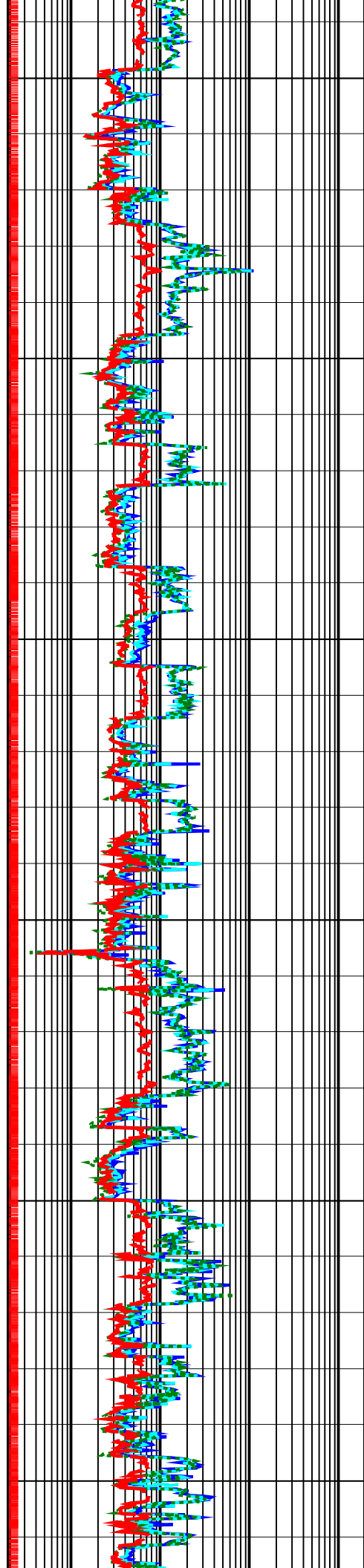
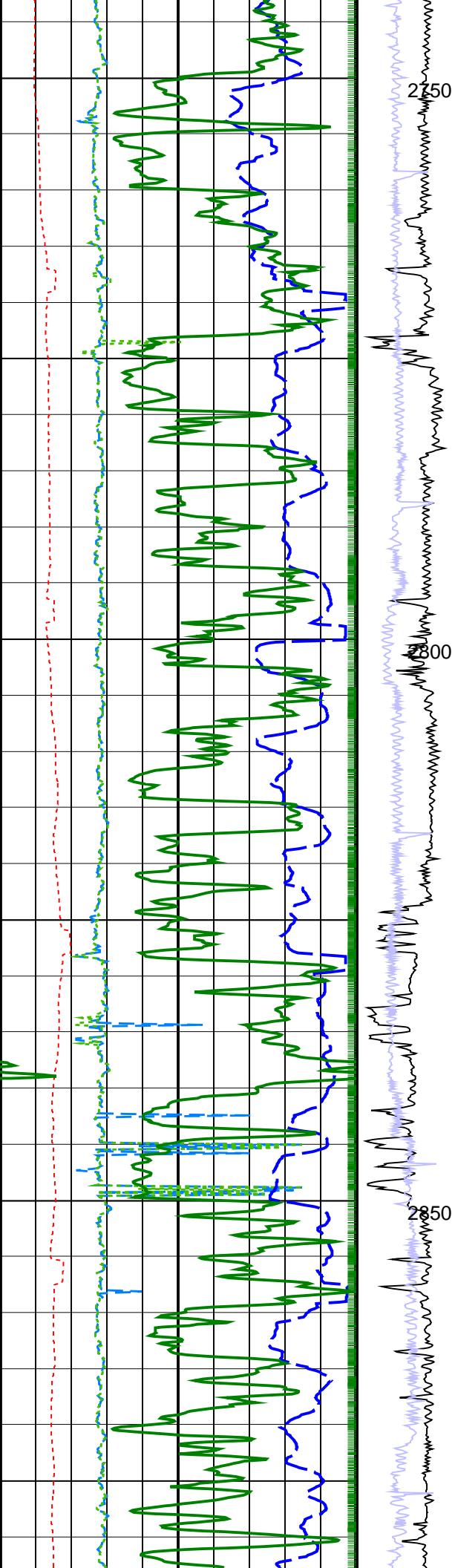
240

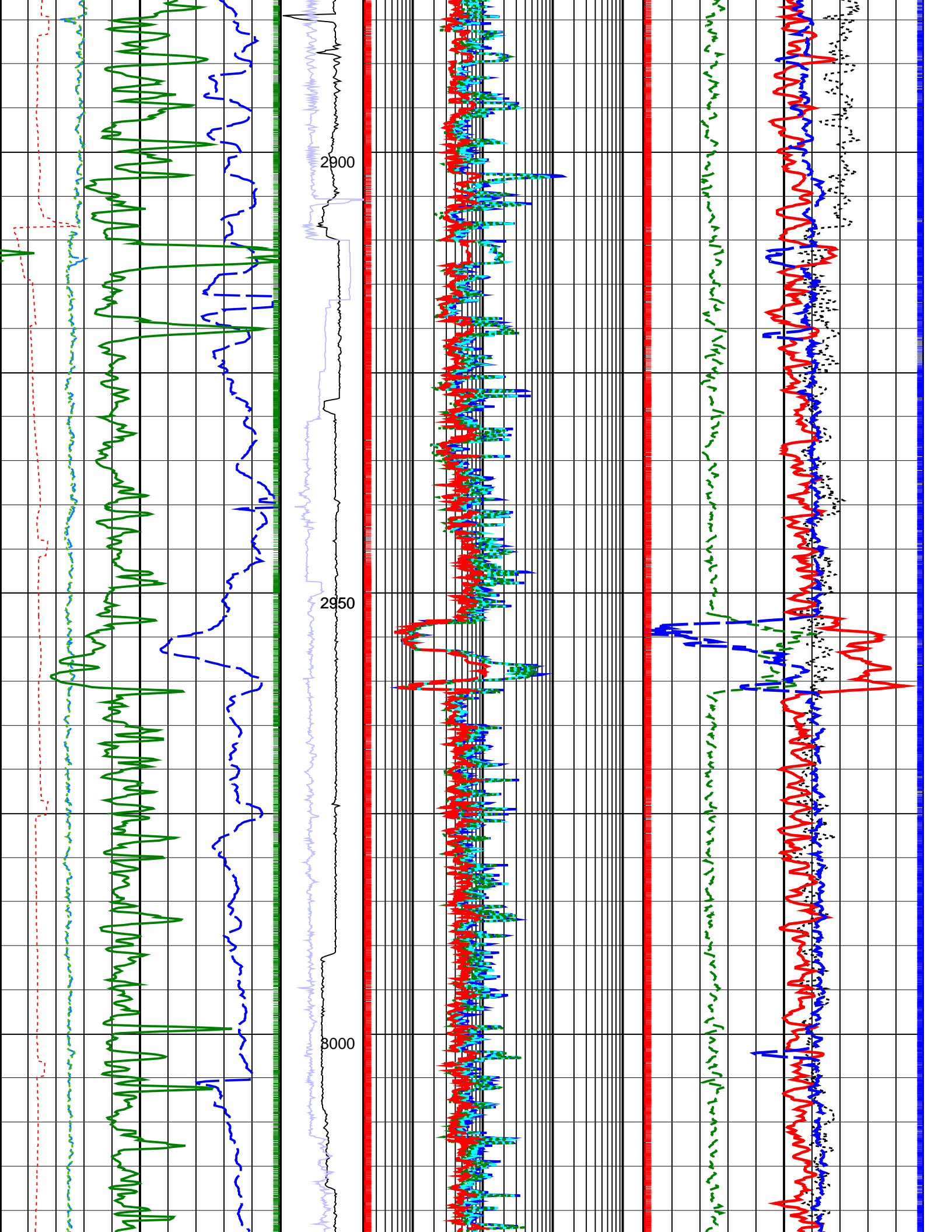
240

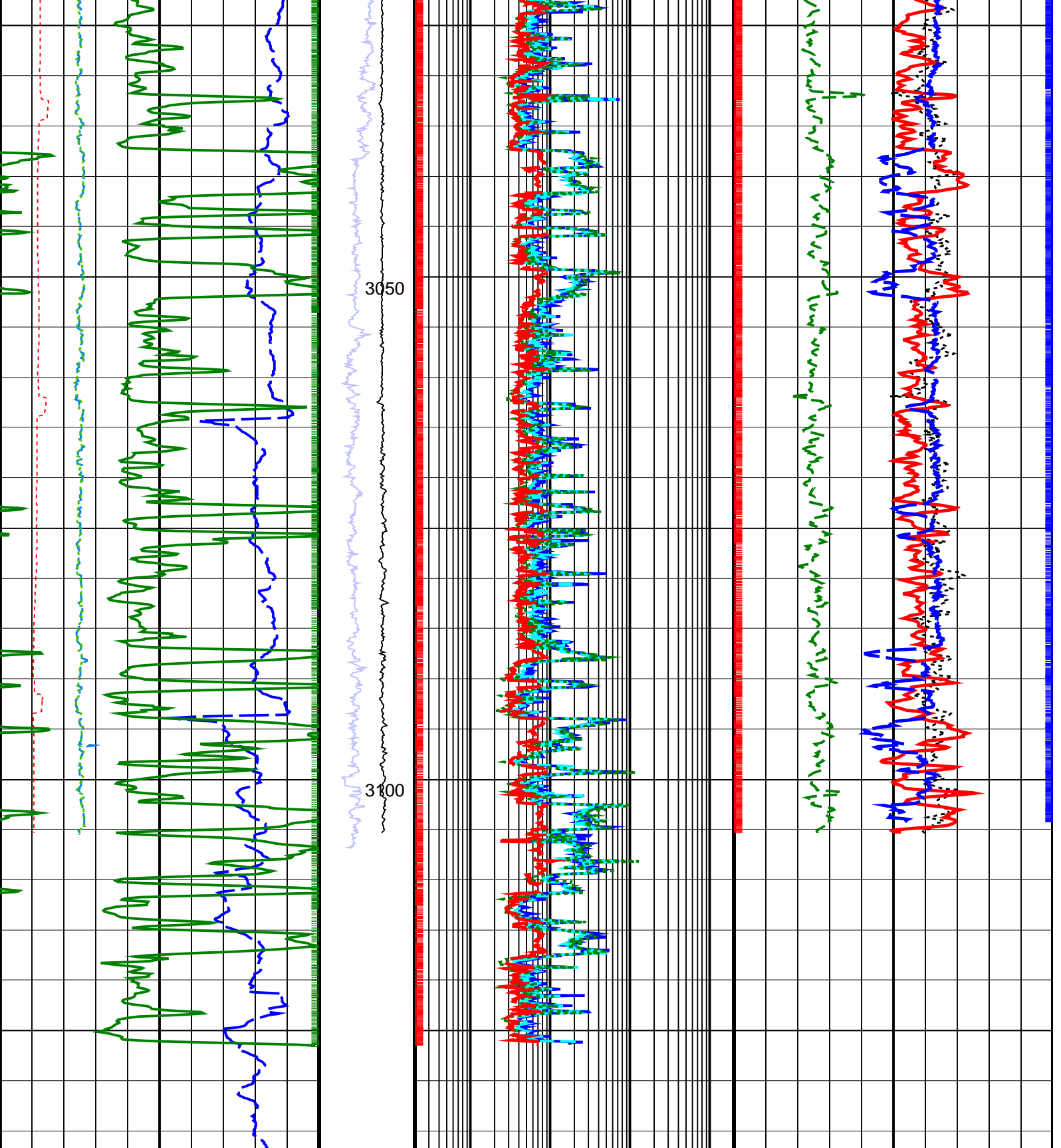












<p>Density Time After Bit (TAB_DEN) (HR)</p> <p>0 10</p>	<p>ADN Rotational Speed (RPM_ADN) (RPM)</p> <p>0 250</p>	<p>Deep Button Resistivity (RES_BD) (OHMM)</p> <p>0.2 2000</p>	<p>Bulk Density Correction, Bottom (DRHB) (G/C3)</p> <p>-0.25 0.25</p>
--	--	--	--

<p>Horizontal Hole Diameter (HORD) (IN)</p> <p>6 16</p>	<p>RAB Rotational Speed (RPM_RAB) (RPM)</p> <p>250 0</p>	<p>Medium Button Resistivity (RES_BM) (OHMM)</p> <p>0.2 2000</p>	<p>Photoelectric Factor, Bottom (PEB) (----</p> <p>0 10</p>
---	--	--	---

Vertical Hole Diameter (VERD) (IN)	6	16	Shallow Button Resistivity (RES_BS) (OHMM)	0.2	2000	Bulk Density, Bottom (ROBB) (G/C3)	1.95	2.95
RAB Gamma Ray (GR_RAB) (GAPI)	0	200	Ring Resistivity (RES_RING) (OHMM)	0.2	2000	Thermal Neutron Porosity (TNPH) (PU)	45	-15
Rate of Penetration, Averaged over Last 5ft (ROP5_RM) (M/HR)	200	0						

PIP SUMMARY

Density Samples †

Neutron Samples †

‡ Gamma Ray Samples

† Ring Samples

IDEAL Version: ID13_0C_06

IDF

RAB id13_0c_02 MWD_10 id13_0c_02
 ADN id13_0c_02